

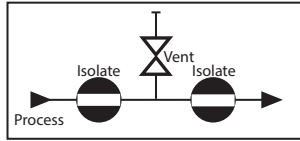
# MODEL - BVP



## FLANGED Double Block and Bleed (DBB) Valves (With Vent Plug)

<b>ISOLATE</b>	Red
<b>VENT</b>	Yellow
<b>EQUALIZE</b>	Blue

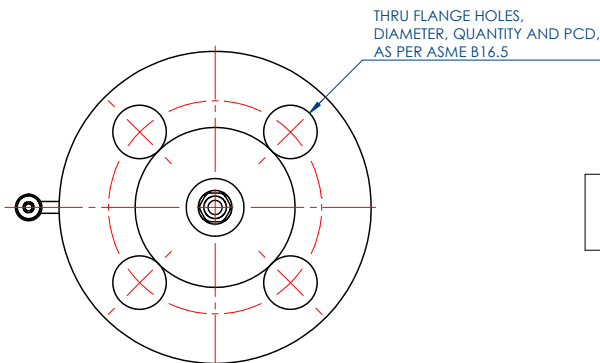
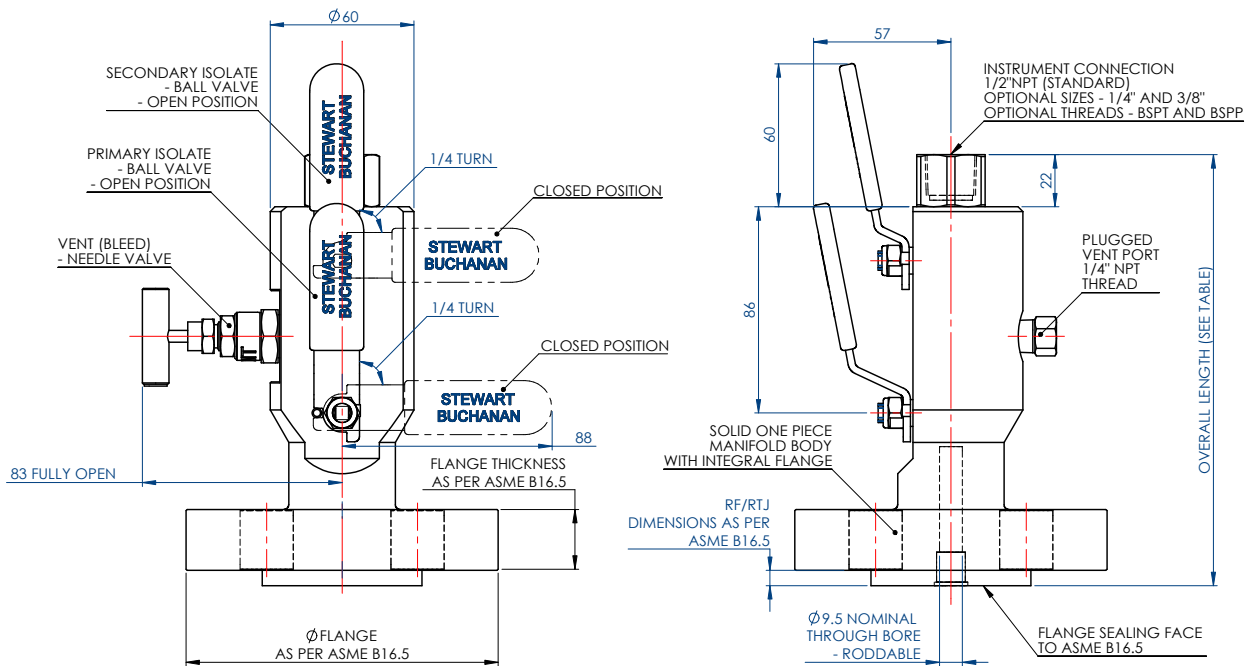
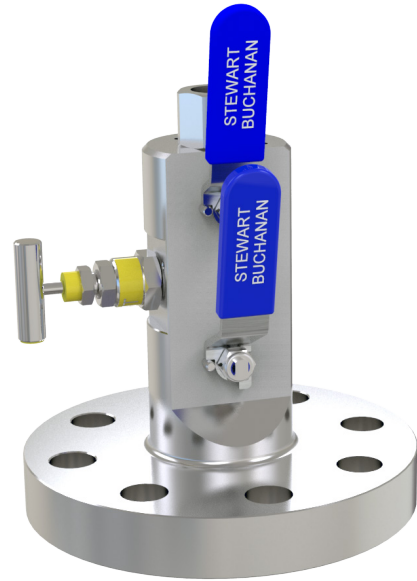
Valve Colour Coding



### APPLICATION

The BVP flanged double block bleed valves are suitable for gauge or instrument mounting direct to a system via a standard flange take off point. Various flange ratings are available to suit many pressure ratings and sizes within the piping system. Standard applications include static instrumentation, pressure gauges, manometers and pressure switches. With its integral design, considerable cost, weight and space saving is gained over traditional installations, as well as increased safety due to reduced potential leak paths. Manufactured with the primary and secondary isolate ball valves in line, the BVP is fully rodable allowing for efficient cleaning and maintenance.

Fire safe models are available to meet EEMUA pub. No. 182 – contact SBG sales for details.



FLANGE DIMENSIONS AND WORKING PRESSURES ARE AS STATED IN ASME B16.5

## STEWART-BUCHANAN GAUGES LTD

Sales Office & Manufacturing Facility - 7 Garrell Road, Burnside Industrial Estate Kilsyth, Glasgow G65 9JX, SCOTLAND  
Tel: +44 (0)1236 821533 | Fax: +44 (0)1236 824090 | E-mail: sales@stewarts-group.com | Web: stewarts-group.com

DATA SHEET REF: BVP-REV01-14



# MODEL - BVP



## FLANGED Double Block and Bleed (DBB) Valves (With Vent Plug)

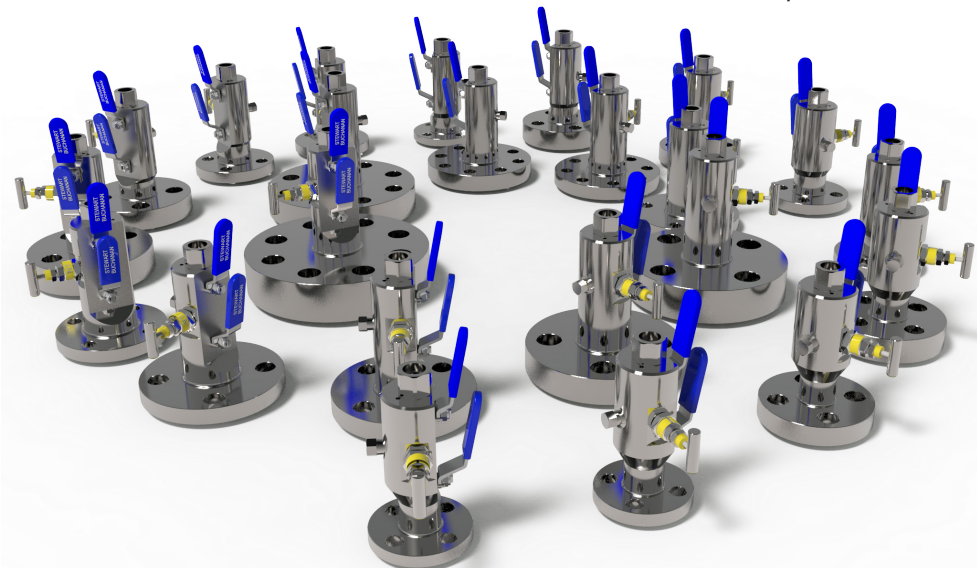
### DIMENSION CHART

Flange Size Code	Standard Overall Manifold Dimensions in mm (excluding valve handles) TO 2", tol± 1mm																								
	1/2" (1)					3/4" (2)					1" (3)					1.5" (4)					2" (5)				
	RF		RTJ		Ø Flange	RF		RTJ		Ø Flange	RF		RTJ		Ø Flange	RF		RTJ		Ø Flange	RF		RTJ		Ø Flange
Std	Fire Safe	Std	Fire Safe	Std		Fire Safe	Std	Fire Safe	Std		Fire Safe	Std	Fire Safe	Std		Fire Safe	Std	Fire Safe	Std		Fire Safe	Std	Fire Safe	Std	
150 (A)	173	177	-	-	89	173	177	-	-	98	173	177	178	182	108	173	177	178	182	127	173	177	178	182	152
300 (B)	173	177	177	181	95	173	177	178	182	118	173	177	178	182	124	173	177	178	182	156	173	177	179	183	165
600 (C)	178	182	177	181	95	180	184	180	180	118	180	184	180	184	125	180	184	180	184	156	180	184	181	185	165
900/1500 (D/E)	180	184	180	184	121	180	184	180	180	130	193	197	193	193	149	193	197	193	197	178	213	217	213	217	216
2500 (F)	193	197	193	197	133	193	197	193	193	140	193	197	193	193	159	213	217	213	217	203	216	220	216	220	235

### HOW TO ORDER

BVP FLANGE Part No Creation				
SAMPLE PART NO				
BVP-1C-07F-RF-AI-AL (ADD AL WHEN ISO15156 / NACE MR0175 IS REQUIRED)				
1	c	07F	RF	AI
INLET SIZE & RATING		OUTLET CODES	FLANGE TYPE	316 Stainless Steel (UNS S31600)
1 = 1/2" (DN15)	A = 150 CLASS	03F = 1/4" NPT	RF = RAISED FACE	AI = 316 Stainless Steel (UNS S31600)
2 = 3/4" (DN20)	B = 300 CLASS	05F = 3/8" NPT	RTJ = RING TYPE JOINT	MO = MONEL® 400 (UNS N04400)
3 = 1" (DN25)	C = 600 CLASS	07F = 1/2" NPT		HA = HASTELLOY® C-276® (UNS N10276)
4 = 1.5" (DN40)	D = 900 CLASS	04F = 1/4" BSPP		IL = INCONEL® 625 (UNS N06625)
5 = 2" (DN50)	E = 1500 CLASS	06F = 3/8" BSPP		IN = INCOLOY® 825 (UNS N08825)
6 = 2.5" (DN65)	F = 2500 CLASS	08F = 3/8" BSPP		TI = TITANIUM Gr.2 (UNS R50400)
7 = 3" (DN80)	G = PN2.5	13F = 1/4" BSPTaper		DU = DUPLEX UNS (UNS S31803)
8 = 4" (DN100)	H = PN6	14F = 3/8" BSPTaper		SD = SUPER DUPLEX (UNS S32760)
	J = PN10	15F = 1/2" BSPTaper		HC = HASTELLOY® C-22 (UNS N06022)
	K = PN16	Integral SWIVEMAS® Connection to Stewarts Pressure Gauge available		SA = SUPER AUSTENITIC ST.ST 6%Mo (UNS S31254)
	L = PN25			
	M = PN40			
	N = PN63			
				Note: Other materials available on request.

See HOW TO ORDER NEEDLE VALVE & BALL VALVE Data Sheets For Optional Extras



### STEWART-BUCHANAN GAUGES LTD

Sales Office & Manufacturing Facility - 7 Garrell Road, Burnside Industrial Estate Kilsyth, Glasgow G65 9JX, SCOTLAND  
Tel: +44 (0)1236 821533 | Fax: +44 (0)1236 824090 | E-mail: sales@stewarts-group.com | Web: stewarts-group.com

